

Self-refilling microdispenser pipette

The Acura® self-refill 865

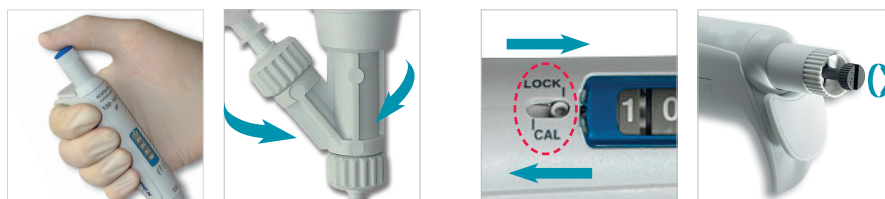
Hand-held microdispenser intended for repeat distribution of microliter volumes. The dispensing pipette includes a three-way valve system for automatic self-refilling. Carefully selected materials ensure durability and optimal resistance to aggressive media. Instrument combines easy handling of a regular micropipette with flexibility of a repeater pipette. Three-year warranty.

- Excellent ergonomics, soft plunger activation
- *Swift-set* user calibration system
- No need for consumables
- Autoclavable fully assembled at 121°C / 250°F
- Versatile feeding through bottle, tubing or syringe



865
5 - 50 µL
20 - 200 µL
100 - 1000 µL

See chemical compatibility page [41](#)



Excellent ergonomics

Instrument shape and lightweight offer most convenient pipetting comfort. Smooth plunger activation drastically reduces hand fatigue.

Convenient dispensing

Reliable valve system ensures high performance dispensing, dose after dose. It revolves to allow selection of the best working position.

Performance and ordering information - Instruments

Including 90 cm silicone tubing, SS blunt end cannula, female Luer inlet valve cap, QC certificate and operating instructions.

Volume	Division	Inaccuracy (E %)			Imprecision (CV %)			Cat. No.
		Min. vol.	Mid. vol.	Max. vol.	Min. vol.	Mid. vol.	Max. vol.	
5 - 50 µL	0.1 µL	<± 5.0 %	<± 3.5 %	<± 1.5 %	< 2.0 %	< 1.4 %	< 0.4 %	865.0050
20 - 200 µL	0.2 µL	<± 2.5 %	<± 1.8 %	<± 1.0 %	< 1.5 %	< 1.0 %	< 0.3 %	865.0200
100 - 1000 µL	1.0 µL	<± 1.5 %	<± 1.1 %	<± 0.6 %	< 0.6 %	< 0.4 %	< 0.2 %	865.1000

Performance values obtained with bidest. water at constant temperature (± 0.5°C) comprised between 20 and 25°C in accordance with ISO 8655. Values altered using manifold.



Protective calibration seal sticker

Swift-set calibration system

Easy and precise system with integrated key and locking mechanism, making tedious procedures a thing of the past.

Choice of feeding sources

Supplied with 90 cm silicone tubing, the instrument also fits optional feeding sources: ① bottle, ② vial, ③ syringe.

Great distribution flexibility

Outlet nozzle fits any Luer Lock needles and cannulas. Optional PTFE cannula provides enhanced chemical resistance. Use 4- or 8-channel manifold when dispensing into microplates.

Ordering information - Accessories

Description	Packaging	Cat. No.
Reservoir*, 30 mL, PP, Luer	1 / pk	1.861.631
Reservoir*, 30 mL, PTFE, Luer	1 / pk	1.861.21T
Vial holder*, Luer	1 / pk	1.861.925
Inlet valve cap*, female Luer (for syringe)	1 / pk	1.861.720
Outlet valve cap*, Luer Lock	1 / pk	1.861.569
PTFE delivery cannula*	1 / pk	1.861.E32
Manifold*, 4-channel, Luer Lock, stainless steel (20mm spacing)	1 / pk	1.170.054
Manifold*, 8-channel, Luer Lock, stainless steel (9mm spacing)	1 / pk	1.170.058
Pipette stand 340 for 3 pipettes	1 / pk	320.340

*Autoclavable